

**520连接盒用连接器**  
520 Push-in connection terminal block

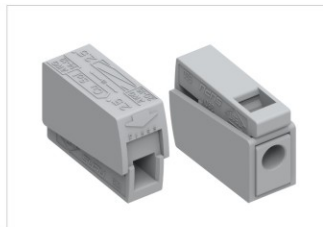
订货号 Order No.

IEC额定电流/电压/接线面积 [A]/[V]/[mm<sup>2</sup>]  
IEC Current/Voltage/Wire range

UL额定电流/电压/接线面积 [A]/[V]/[AWG]  
UL Current/Voltage/Wire range

剥线长度/扭力 [mm]/\*  
Strip length/Torque

厚度/长度/高度 Thickness/Length/Height [mm]



520101-GY ● 灰色Gray

24 / 400 / 供电侧power supply 1.0-2.5  
24 / 400 / 照明侧lighting 0.5-2.5

20 / 600 / 供电侧power supply 14-12  
20 / 600 / 照明侧lighting 20-16

9-11 / \*

8.1 / 20.75 / 14.67



520112-WT ○ 白灰色Light gray

24 / 400 / 供电侧power supply 1.0-2.5  
24 / 400 / 照明侧lighting 0.5-2.5

20 / 600 / 供电侧power supply 14-12  
20 / 600 / 照明侧lighting 20-16

9-11 / \*

10.03 / 20.75 / 15.52



520201-GY ● 灰色Gray

24 / 400 / 供电侧power supply 1.0-2.5  
24 / 400 / 照明侧lighting 0.5-2.5

20 / 600 / 供电侧power supply 14-12  
20 / 600 / 照明侧lighting 20-16

9-11 / \*

8.1 / 43.5 / 14.67

**522连接盒用连接器**  
522 Push-in connection terminal block

订货号 Order No.

IEC额定电流/电压/接线面积 [A]/[V]/[mm<sup>2</sup>]  
IEC Current/Voltage/Wire range

UL额定电流/电压/接线面积 [A]/[V]/[AWG]  
UL Current/Voltage/Wire range

剥线长度/扭力 [mm]/\*  
Strip length/Torque

厚度/长度/高度 Thickness/Length/Height [mm]



522303-GY ● 灰色Gray

41 / 400 / 1.5-6.0

30 / 600 / 14-10

10-12 / \*

14.23 / 28.6 / 20.1



522402-OG ● 橙色Orange

24 / 400 / 0.75-2.5

20 / 600 / 18-12

10-12 / \*

8.21 / 15.58 / 18.5



522404-BU ● 蓝色Blue

24 / 400 / 0.75-2.5

20 / 600 / 18-12

10-12 / \*

12.32 / 15.8 / 18.58



522406-BK ● 黑色Black

24 / 400 / 0.75-2.5

20 / 600 / 18-12

10-12 / \*

15.58 / 16.1 / 18.5



522408-WT ○ 白灰色Light gray

24 / 400 / 0.75-2.5

20 / 600 / 18-12

10-12 / \*

15.58 / 20.52 / 18.5

**525插线式连接器**  
525 Plug-in connector

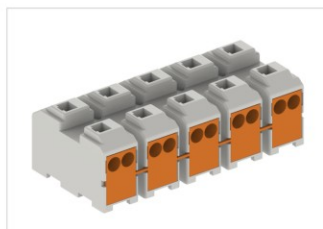
订货号 Order No.

IEC额定电流/电压/接线面积 [A]/[V]/[mm<sup>2</sup>]  
IEC Current/Voltage/Wire range

UL额定电流/电压/接线面积 [A]/[V]/[AWG]  
UL Current/Voltage/Wire range

剥线长度/扭力 [mm]/\*  
Strip length/Torque

厚度/长度/高度 Thickness/Length/Height [mm]



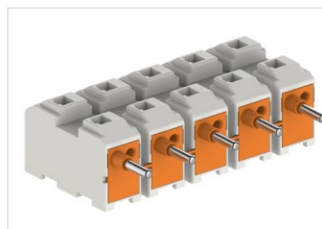
525202 ○ 白灰色Light gray  
525203  
.....  
525211  
525212

16 / 400 / 0.5-2.5

10 / 300 / 20-14

10-12 / \*

23.5 / ( P-1 ) x10.0+8.5 / 15.3



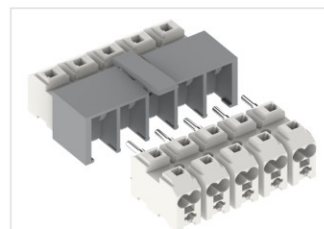
525402 ○ 白灰色Light gray  
525403  
.....  
525411  
525412

16 / 400 / 0.5-2.5

10 / 300 / 20-14

10-12 / \*

23.5 / ( P-1 ) x10.0+8.5 / 15.3



525802 ○ 白灰色Light gray  
525803  
525811  
525812

16 / 400 / 0.5-2.5

10 / 300 / 20-14

10-12 / \*

47.60 / ( P-1 ) x10.0+12.8 / 16.50



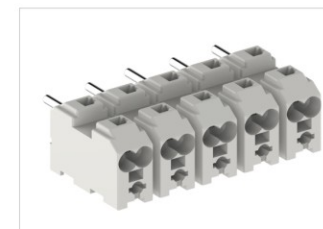
525202/500 ○ 白灰色Light gray  
525203/500  
525204/500  
525205/500

16 / 400 / 0.5-2.5

10 / 300 / 20-14

10-12 / \*

32 / 52.8 / 18.8



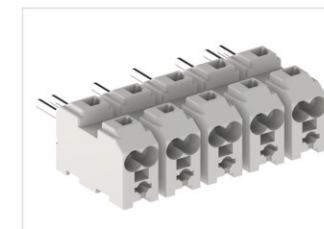
525402/00D ○ 白灰色Light gray  
525403/00D  
525404/00D  
525405/00D

16 / 400 / 0.5-2.5

10 / 300 / 20-14

10-12 / \*

23.5 / 48.5 / 15.3



525403/07D ○ 白灰色Light gray  
525404/07D  
525405/07D

16 / 400 / 0.5-2.5

10 / 300 / 20-14

10-12 / \*

23.5 / 48.5 / 15.3