











MCS连接器选型配比表 MCS connector selection ratio table		4251XX	4351XX 4351XX/050	4355XX 4355XX/030	4381XX 4381XX/050	4501XX 4501XX/010 4501XX/030 4501XX/050	45015X 45015X/010 45015X/030	45025X 45025X/110	45035X	4506XX 4506XX/010 4506XX/030 4506XX/050
订货号 Order No.	Pin 间距									
 4754XX 4754XX/010 4754XX/030	7.5									
 4754XX/060	7.5									
 4757XX-XXD	7.5									
 4758XX-XXD	7.5									
 4759XX 4759XX/010 4759XX/030	7.5									
 4759XX/060	7.5									
 4782XX-XXD	7.62									
 4783XX-XXD	7.62									
 4784XX 4784XX/010 4784XX/030	7.62									
 4784XX/060	7.62									

45065X 45065X/010 45065X/030	45075X 45075X/110	45085X	4581XX 4581XX/010 4581XX/030 4581XX/050	4751XX 4751XX/010 4751XX/030 4751XX/050	47525X	47535X	4756XX 4756XX/010 4756XX/030 4756XX/050	47575X	47585X	4781XX 4781XX/010 4781XX/030 4781XX/050
5.0	5.0	5.0	5.08	7.5	7.5	7.5	7.5	7.5	7.5	7.62
				●	●	●				
				●						
							●			
							●			
							●	●	●	
							●			
										●
										●
										●
										●

多用途弹簧连接器附件
Accessory

附件一 Accessory 1 :
适用于具有笼式弹簧接线单元的孔型连接器；
具有笼式弹簧接线单元的针型连接器；适用于435、438系列。
Apply to 435, 438 female/male series.

护线板 Protection plate	订货号 Order No.	宽度 Width	通道数 Pole No.
	/100	6mm 12.5mm 25mm 35mm	2/3 4/5/6 7/8/9 10/11/12

注：可在工厂安装也可自行安装
Note: Factory installation or self installation

附件二 Accessory 2 :
适用于具有笼式弹簧接线单元的孔型连接器；
具有笼式弹簧接线单元的针型连接器；适用于450、458、475系列。
Apply to 450, 458, 475 female/male series.

护线板 Protection plate	订货号 Order NO.	宽度 Width	450/458通道数 450/458Pole No.	475/478通道数 475/478Pole No.
	/100	11.5mm 20mm 30mm 50mm	2/3 4/5/6 7-9 10-24	2 3/4/5 6/7 8-12

附件三 Accessory 3 :
适用于具有笼式弹簧接线单元的孔型连接器；具有笼式弹簧接线单元的针型连接器；
适用于450、458、475系列。
Apply to 450, 458, 475 female/male series.

护线盒Relief housing

针距 Pitch	3.5mm	5.0mm	5.08mm	7.5mm
2	435554(4p)	450502	458502	475502
3	435555(5p)	450503	458503	475503
...	435556(6p)	475507
12		450512	458512	

注：该类更多产品信息请电话咨询！
Note: For more information, please call us directly

导轨转换器Rail transfer
订货号Order NO.: 450018
包装数量Package quantity: 100
适用于SP450/475连接器
Apply to SP 450/475 connector



450018

附件四 Accessory 4 :

简易连线工具(金属)
Easy connect tool (metal)
订货号Order NO.: 435013
适用于435、438孔型和针型连接器
Used for 435, 438 female and male connector

新型简易连线工具(金属)
Easy connect tool (metal)
订货号Order NO.: 450023
适用于450、458、475、478孔型和针型连接器
Used for 450, 458, 475, 478 female and male connector

简易连线工具
Easy connect tool
订货号Order NO.: 450014
适用于450、475孔型和针型连接器
Used for 450, 475 female and male connector

450绝缘型相邻跨接桥
Sp450 Insulated type adjacent jumper
订货号Order No.: 450012
适用于450孔型和针型连接器
Apply to SP450 connectors

225系列 225 series
绝缘型2插脚梳状跨接桥
2 way insulation comb jumper
订货号Order NO.: 225332
适用于450孔型和针型连接器
Apply for 450 female and male connector



225系列 225 series
绝缘型3插脚梳状跨接桥
3 way insulation comb jumper
订货号Order NO.: 225333
适用于450孔型和针型连接器
Apply for 450 female and male connector

拨码元件 Coding key
订货号Order NO.: 435015
适用于435、438系列带焊针插座的连接器
Apply for 435, 438 header with solder pins

订货号Order NO.: 450015
适用于450、458系列带焊针插座的连接器
Apply for 450, 458 header with solder pins

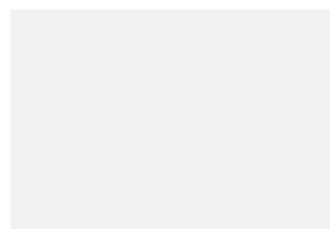
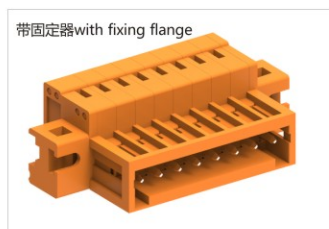
订货号Order NO.: 475015
适用于475、478系列带焊针插座的连接器
Apply for 475, 478 header with solder pins

标记字符 Marked Numbers :
可按客户要求打印字符，下表字符打印在原定货号后加后缀。
For more product information, please contact us!
Can mark according to customer's request. The number in the below list can be added following the original order No.

打印字符描述 Description of marked numbers	产品 Product	正面打印 字符 Front side marking	双面字符打印型号 Two-side marking	
		孔型 Female type	针型 Male type	
1 2 3 4 ... 23 24		/001	/006	/007
1 2 ⊕ 4 ... 23 24		/002	/008	/009
1 2 3 4 ... 23 24		/003	-	-
1 2 ⊕ 4 ... 23 24		/004	-	-

/005按客户要求而定
According to customers' request.

3.81mm间距针型连接器
3.81mm Male connector with spring-cage clamp



订货号 Order No.	
IEC额定电流/电压/接线面积 IEC Current/Voltage/Wire range	[A]/[V]/[mm ²]
UL额定电流/电压/接线面积 UL Current/Voltage/Wire range	[A]/[V]/[AWG]
剥线长度/焊针出脚长度/焊针尺寸 Strip length/Pin length/Pin header size	[mm]
通道数 Poles No.	

438402 ● 橙色 Orange	10 / 160 / 0.2-1.5
438403	10 / 300 / 28-16
438424	7-8 / * / *
	2-24

438402/010 ● 橙色 Orange	10 / 160 / 0.2-1.5
438403/010	10 / 300 / 28-16
438424/010	7-8 / * / *
	2-24

5.0mm间距孔型连接器
5.0mm Female connectors



订货号 Order No.	
IEC额定电流/电压/接线面积 IEC Current/Voltage/Wire range	[A]/[V]/[mm ²]
UL额定电流/电压/接线面积 UL Current/Voltage/Wire range	[A]/[V]/[AWG]
剥线长度/焊针出脚长度/焊针尺寸 Strip length/Pin length/Pin header size	[mm]
通道数 Poles No.	

450102 ● 灰色 Gray	12 / 320 / 0.2-2.5
450103	15 / 300 / 28-12
450124	8-9 / * / *
	2-24

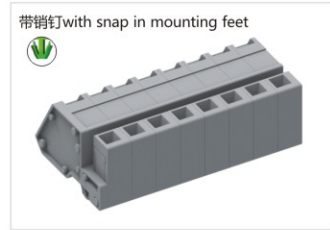
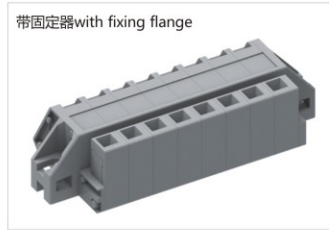
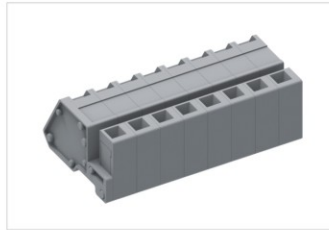
450102/010 ● 灰色 Gray	12 / 320 / 0.2-2.5
450103/010	15 / 300 / 28-12
450124/010	8-9 / * / *
	2-24

450102/030 ● 灰色 Gray	12 / 320 / 0.2-2.5
450103/030	15 / 300 / 28-12
450124/030	8-9 / * / *
	2-24

450102/050 ● 灰色 Gray	12 / 320 / 0.2-2.5
450103/050	15 / 300 / 28-12
450124/050	8-9 / * / *
	2-24



5.0mm间距孔型弯头连接器
5.0mm Female right head connector with spring-cage clamp



订货号 Order No.	
IEC额定电流/电压/接线面积 IEC Current/Voltage/Wire range	[A]/[V]/[mm ²]
UL额定电流/电压/接线面积 UL Current/Voltage/Wire range	[A]/[V]/[AWG]
剥线长度/焊针出脚长度/焊针尺寸 Strip length/Pin length/Pin header size	[mm]
通道数 Poles No.	

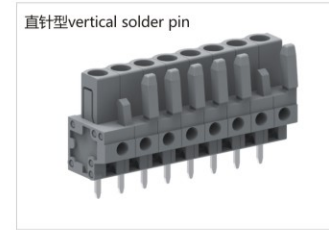
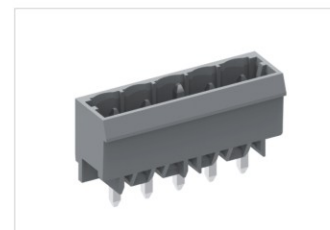
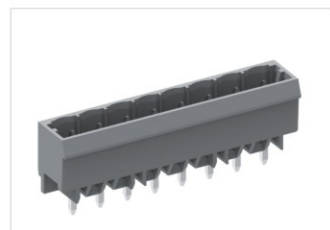
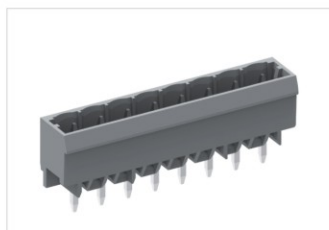
450152 ● 灰色 Gray	12 / 320 / 0.2-2.5
450153	15 / 300 / 28-12
450174	8-9 / * / *
	2-24

450152/010 ● 灰色 Gray	12 / 320 / 0.2-2.5
450153/010	15 / 300 / 28-12
450174/010	8-9 / * / *
	2-24

450152/030 ● 灰色 Gray	12 / 320 / 0.2-2.5
450153/030	15 / 300 / 28-12
450174/030	8-9 / * / *
	2-24

5.0mm间距孔型插头带焊针
5.0mm Female connector with spring-cage clamp with solder pin

5.0mm间距直型焊针插座
5.0mm Male connector with straight pin



订货号 Order No.	
IEC额定电流/电压/接线面积 IEC Current/Voltage/Wire range	[A]/[V]/[mm ²]
UL额定电流/电压/接线面积 UL Current/Voltage/Wire range	[A]/[V]/[AWG]
剥线长度/焊针出脚长度/焊针尺寸 Strip length/Pin length/Pin header size	[mm]
通道数 Poles No.	

450202 ● 灰色 Gray	12 / 320 / *
450203	15 / 300 / *
450224	* / 4.5 / 1.0x1.0
	2-24

450202/110 ● 灰色 Gray	12 / 320 / *
450203/110	15 / 300 / *
450224/110	* / 14 / 1.2x1.2
	2-24

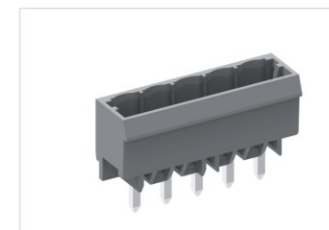
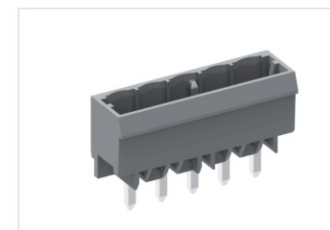
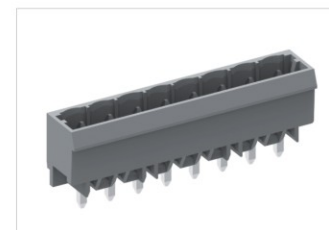
450202-01D ● 灰色 Gray	12 / 320 / *
450203-01D	15 / 300 / *
450224-01D	* / 3.8 / 1.0x1.0
	2-24

450203-03D ● 灰色 Gray	16 / 250 / *
450204-03D	15 / 600 / *
450205-03D	* / 3.8 / 1.2x1.2
	3 / 4 / 5

450252 ● 灰色 Gray	12 / 320 / *
450253	15 / 300 / *
450274	* / 5 / 0.6x1.0
	2-24

450252/110 ● 灰色 Gray	12 / 320 / *
450253/110	15 / 300 / *
450274/110	* / 14.4 / 0.6x1.0
	2-24

450352 ● 灰色 Gray	12 / 320 / *
450353	15 / 300 / *
450374	* / 5 / 0.6x1.0
	2-24



450202-04D ● 灰色 Gray	16 / 250 / *
450203-04D	15 / 600 / *
450224-04D	* / 3.8 / 1.2x1.2
	2-24

450203-05D ● 灰色 Gray	16 / 250 / *
450204-05D	15 / 600 / *
450205-05D	* / 5.0 / 1.2x1.2
	3 / 4 / 5

450203-06D ● 灰色 Gray	16 / 250 / *
450204-06D	15 / 600 / *
450205-06D	* / 5.0 / 1.2x1.2
	3 / 4 / 5

5.0mm间距弯型焊针插座
5.0mm Male connector with angled solder pin

订货号 Order No.	
IEC额定电流/电压/接线面积 IEC Current/Voltage/Wire range	[A]/[V]/[mm ²]
UL额定电流/电压/接线面积 UL Current/Voltage/Wire range	[A]/[V]/[AWG]
剥线长度/焊针脚长度/焊针尺寸 Strip length/Pin length/Pin header size	[mm]
通道数 Poles No.	



450302 ● 灰色Gray	12 / 320 / *
450303	15 / 300 / *
450324	* / 3.8 / 1.0x1.0
	2-24



450303-00D ● 灰色Gray	16 / 250 / *
450304-00D	15 / 600 / *
450305-00D	* / 3.8 / 1.0x1.0
	3 / 4 / 5



450303-03D ● 灰色Gray	16 / 250 / *
450304-03D	15 / 600 / *
450305-03D	* / 3.8 / 1.2x1.2
	3 / 4 / 5



450302-04D ● 灰色Gray	16 / 250 / *
450303-04D	15 / 600 / *
450324-04D	* / 3.8 / 1.2x1.2
	2-24

5.0mm间距针型连接器
5.0mm Male connector with spring-cage clamp

订货号 Order No.	
IEC额定电流/电压/接线面积 IEC Current/Voltage/Wire range	[A]/[V]/[mm ²]
UL额定电流/电压/接线面积 UL Current/Voltage/Wire range	[A]/[V]/[AWG]
剥线长度/焊针脚长度/焊针尺寸 Strip length/Pin length/Pin header size	[mm]
通道数 Poles No.	



450402 ● 灰色Gray	12 / 320 / 0.2-2.5
450403	15 / 300 / 28-12
450424	8-9 / * / *
	2-24



450402/010 ● 灰色Gray	12 / 320 / 0.2-2.5
450403/010	15 / 300 / 28-12
450424/010	8-9 / * / *
	2-24



450402/030 ● 灰色Gray	12 / 320 / 0.2-2.5
450403/030	15 / 300 / 28-12
450424/030	8-9 / * / *
	2-24



450402/060 ● 灰色Gray	12 / 320 / 0.2-2.5
450403/060	15 / 300 / 28-12
450424/060	8-9 / * / *
	2-24

5.0mm间距穿墙式连接器
5.0mm Through-wall connector

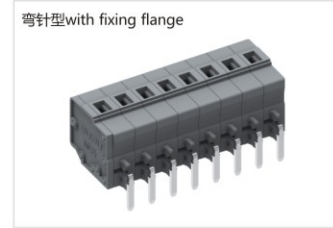
订货号 Order No.	
IEC额定电流/电压/接线面积 IEC Current/Voltage/Wire range	[A]/[V]/[mm ²]
UL额定电流/电压/接线面积 UL Current/Voltage/Wire range	[A]/[V]/[AWG]
剥线长度/焊针脚长度/焊针尺寸 Strip length/Pin length/Pin header size	[mm]
通道数 Poles No.	



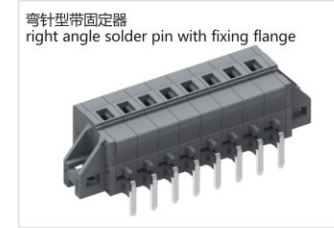
450462 ● 灰色Gray	12 / 320 / 0.2-2.5
450463	15 / 300 / 28-12
450484	8-9 / 11 / 0.8x1.3
	2-24



450462/010 ● 灰色Gray	12 / 320 / 0.2-2.5
450463/010	15 / 300 / 28-12
450484/010	8-9 / 11 / 0.8x1.3
	2-24



450432 ● 灰色Gray	12 / 320 / 0.2-2.5
450433	15 / 300 / 28-12
450454	8-9 / 4.8 / 0.8x1.3
	2-24



450432/010 ● 灰色Gray	12 / 320 / 0.2-2.5
450433/010	15 / 300 / 28-12
450454/010	8-9 / 4.8 / 0.8x1.3
	2-24

5.0mm间距孔型连接器(防错)
5.0mm Female connectors (protected against mismatching)

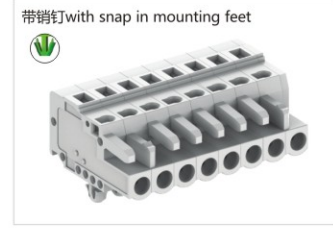
订货号 Order No.	
IEC额定电流/电压/接线面积 IEC Current/Voltage/Wire range	[A]/[V]/[mm ²]
UL额定电流/电压/接线面积 UL Current/Voltage/Wire range	[A]/[V]/[AWG]
剥线长度/焊针脚长度/焊针尺寸 Strip length/Pin length/Pin header size	[mm]
通道数 Poles No.	



450602 ○ 白灰色Light gray	12 / 320 / 0.2-2.5
450603	15 / 300 / 28-12
450624	8-9 / * / *
	2-24



450602/010 ○ 白灰色Light gray	12 / 320 / 0.2-2.5
450603/010	15 / 300 / 28-12
450624/010	8-9 / * / *
	2-24



450602/030 ○ 白灰色Light gray	12 / 320 / 0.2-2.5
450603/030	15 / 300 / 28-12
450624/030	8-9 / * / *
	2-24



450602/050 ○ 白灰色Light gray	12 / 320 / 0.2-2.5
450603/050	15 / 300 / 28-12
450624/050	8-9 / * / *
	2-24



7.5mm间距直型焊针插座
7.5mm Male connector with straight pin

订货号 Order No.	
IEC额定电流/电压/接线面积 IEC Current/Voltage/Wire range	[A]/[V]/[mm ²]
UL额定电流/电压/接线面积 UL Current/Voltage/Wire range	[A]/[V]/[AWG]
剥线长度/焊针出脚长度/焊针尺寸 Strip length/Pin length/Pin header size	[mm]
通道数 Poles No.	

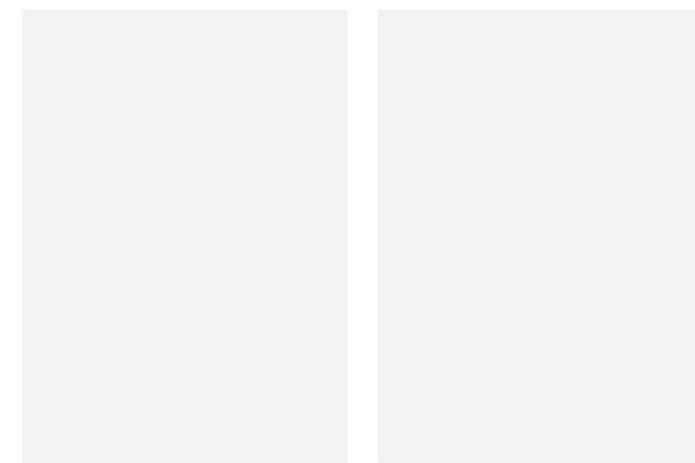
475202 ● 灰色 Gray 475203 475224	16 / 500 / *
	15 / 300 / *
	* / 4.5 / 1.0x1.0
	2-24

475203-03D ● 灰色 Gray 475204-03D 475205-03D	16 / 500 / *
	20 / 600 / *
	* / 3.8 / 1.2x1.2
	3 / 4 / 5

475202-04D ● 灰色 Gray 475203-04D 475224-04D	16 / 500 / *
	20 / 600 / *
	* / 3.8 / 1.2x1.2
	2-24

475203-05D ● 灰色 Gray 475204-05D 475205-05D	16 / 500 / *
	20 / 600 / *
	* / 5.0 / 1.2x1.2
	3 / 4 / 5

475203-06D ● 灰色 Gray 475204-06D 475205-06D	16 / 500 / *
	20 / 600 / *
	* / 5.0 / 1.2x1.2
	3 / 4 / 5



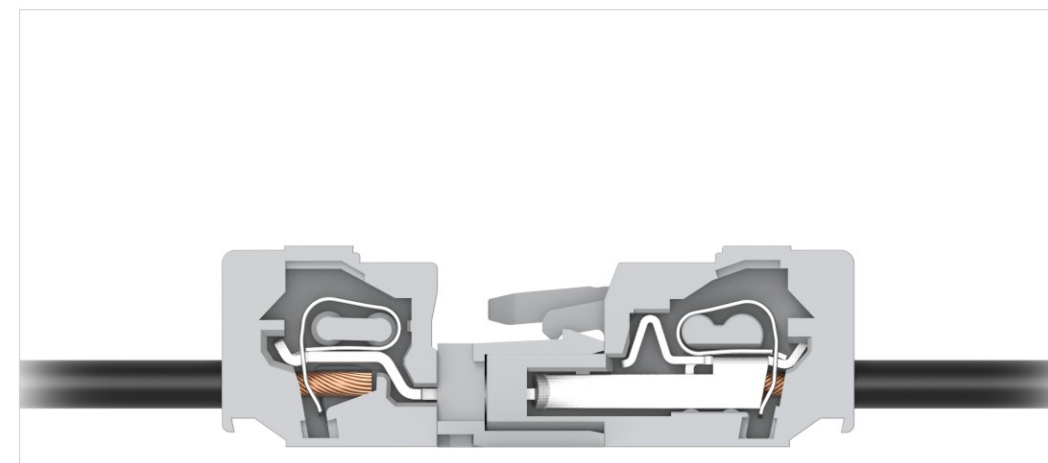
7.5mm间距弯型焊针插座
7.5mm Male connector with angled solder pin

订货号 Order No.	
IEC额定电流/电压/接线面积 IEC Current/Voltage/Wire range	[A]/[V]/[mm ²]
UL额定电流/电压/接线面积 UL Current/Voltage/Wire range	[A]/[V]/[AWG]
剥线长度/焊针出脚长度/焊针尺寸 Strip length/Pin length/Pin header size	[mm]
通道数 Poles No.	

475302 ● 灰色 Gray 475303 475324	16 / 500 / *
	15 / 300 / *
	* / 3.8 / 1.0x1.0
	2-24

475302-03D ● 灰色 Gray 475303-03D 475324-03D	16 / 500 / *
	20 / 600 / *
	* / 3.8 / 1.2x1.2
	2-24

475302-04D ● 灰色 Gray 475303-04D 475324-04D	16 / 500 / *
	20 / 600 / *
	* / 3.8 / 1.2x1.2
	2-24



7.5mm间距针型连接器
7.5mm Male connector with spring-cage clamp

订货号 Order No.	
IEC额定电流/电压/接线面积 IEC Current/Voltage/Wire range	[A]/[V]/[mm ²]
UL额定电流/电压/接线面积 UL Current/Voltage/Wire range	[A]/[V]/[AWG]
剥线长度/焊针出脚长度/焊针尺寸 Strip length/Pin length/Pin header size	[mm]
通道数 Poles No.	

475402 ● 灰色 Gray 475403 475424	16 / 500 / 0.2-2.5
	15 / 300 / 28-14
	8-9 / * / *
	2-24

带固定器with fixing flange 475402/010 ● 灰色 Gray 475403/010 475424/010	16 / 500 / 0.2-2.5
	15 / 300 / 28-14
	8-9 / * / *
	2-24

带销钉with snap in mounting feet 475402/030 ● 灰色 Gray 475403/030 475424/030	16 / 320 / 0.2-2.5
	15 / 300 / 28-14
	8-9 / * / *
	2-24

带穿墙固定器with mounting ears 475402/060 ● 灰色 Gray 475403/060 475424/060	16 / 500 / 0.2-2.5
	15 / 300 / 28-14
	8-9 / * / *
	2-24



7.5mm间距穿墙式连接器
7.5mm Through-wall connector

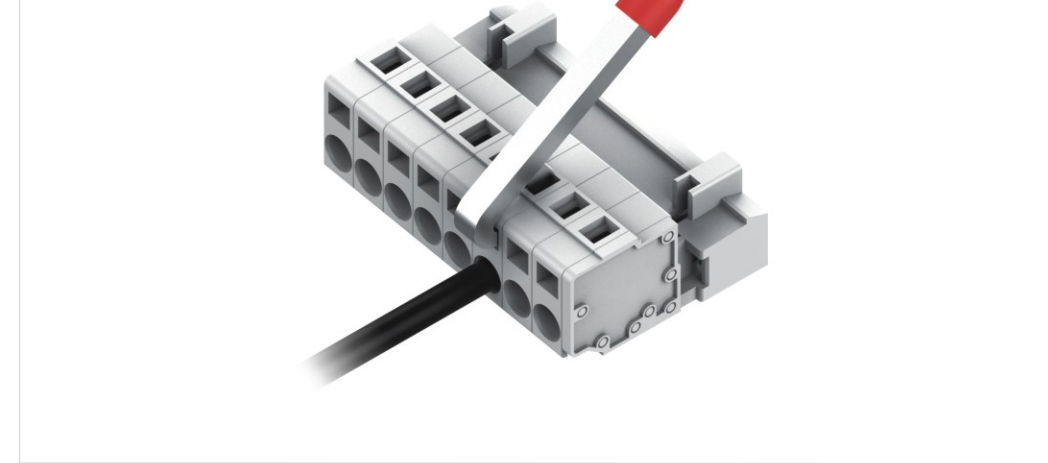
订货号 Order No.	
IEC额定电流/电压/接线面积 IEC Current/Voltage/Wire range	[A]/[V]/[mm ²]
UL额定电流/电压/接线面积 UL Current/Voltage/Wire range	[A]/[V]/[AWG]
剥线长度/焊针出脚长度/焊针尺寸 Strip length/Pin length/Pin header size	[mm]
通道数 Poles No.	

直针型vertical solder pin 475462 ● 灰色 Gray 475463 475484	16 / 500 / 0.2-2.5
	15 / 300 / 28-14
	8-9 / * / *
	2-24

直针型带固定器 vertical solder pin with fixing flange 475462/010 ● 灰色 Gray 475463/010 475484/010	16 / 500 / 0.2-2.5
	15 / 300 / 28-14
	8-9 / * / *
	2-24

弯针型right angle solder pin 475432 ● 灰色 Gray 475433 475454	16 / 500 / 0.2-2.5
	15 / 300 / 28-14
	8-9 / * / *
	2-24

弯针型带固定器 right angle solder pin with fixing flange 475432/010 ● 灰色 Gray 475433/010 475454/010	16 / 500 / 0.2-2.5
	15 / 300 / 28-14
	8-9 / * / *
	2-24



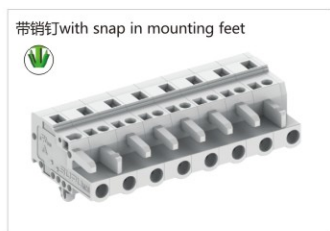
7.5mm间距孔型连接器(防错)
7.5mm Female connectors
(protected against mismatching)



订货号 Order No.	475602 ○ 白灰色Light gray 475603 475624
IEC额定电流/电压/接线面积 IEC Current/Voltage/Wire range	[A]/[V]/[mm ²] 16 / 500 / 0.2-2.5
UL额定电流/电压/接线面积 UL Current/Voltage/Wire range	[A]/[V]/[AWG] 15 / 300 / 28-14
剥线长度/焊针出脚长度/焊针尺寸 Strip length/Pin length/Pin header size	[mm] 8-9 / * / *
通道数 Poles No.	2-24



订货号 Order No.	475602/010 ○ 白灰色Light gray 475603/010 475624/010
IEC额定电流/电压/接线面积 IEC Current/Voltage/Wire range	16 / 500 / 0.2-2.5
UL额定电流/电压/接线面积 UL Current/Voltage/Wire range	15 / 300 / 28-14
剥线长度/焊针出脚长度/焊针尺寸 Strip length/Pin length/Pin header size	8-9 / * / *
通道数 Poles No.	2-24

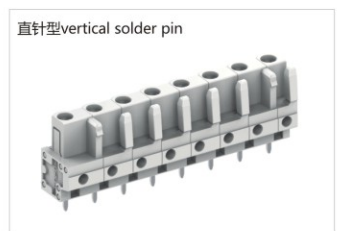


订货号 Order No.	475602/030 ○ 白灰色Light gray 475603/030 475624/030
IEC额定电流/电压/接线面积 IEC Current/Voltage/Wire range	16 / 500 / 0.2-2.5
UL额定电流/电压/接线面积 UL Current/Voltage/Wire range	15 / 300 / 28-14
剥线长度/焊针出脚长度/焊针尺寸 Strip length/Pin length/Pin header size	8-9 / * / *
通道数 Poles No.	2-24



订货号 Order No.	475602/050 ○ 白灰色Light gray 475603/050 475624/050
IEC额定电流/电压/接线面积 IEC Current/Voltage/Wire range	16 / 500 / 0.2-2.5
UL额定电流/电压/接线面积 UL Current/Voltage/Wire range	15 / 300 / 28-14
剥线长度/焊针出脚长度/焊针尺寸 Strip length/Pin length/Pin header size	8-9 / * / *
通道数 Poles No.	2-24

7.5mm间距孔型插头带焊针(防错)
7.5mm Female connector with
spring-cage clamp with solder pin
(protected against mismatching)

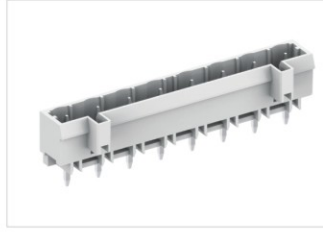


订货号 Order No.	475752 ○ 白灰色Light gray 475753 475774
IEC额定电流/电压/接线面积 IEC Current/Voltage/Wire range	[A]/[V]/[mm ²] 16 / 500 / *
UL额定电流/电压/接线面积 UL Current/Voltage/Wire range	[A]/[V]/[AWG] 15 / 300 / *
剥线长度/焊针出脚长度/焊针尺寸 Strip length/Pin length/Pin header size	[mm] * / 5 / 0.6x1.0
通道数 Poles No.	2-24



订货号 Order No.	475852 ○ 白灰色Light gray 475853 475874
IEC额定电流/电压/接线面积 IEC Current/Voltage/Wire range	16 / 500 / *
UL额定电流/电压/接线面积 UL Current/Voltage/Wire range	15 / 300 / *
剥线长度/焊针出脚长度/焊针尺寸 Strip length/Pin length/Pin header size	* / 5 / 0.6x1.0
通道数 Poles No.	2-24

7.5mm间距直型焊针插座(防错)
7.5mm Male connector
with straight pin
(protected against mismatching)



订货号 Order No.	475702 ○ 白灰色Light gray 475703 475724
IEC额定电流/电压/接线面积 IEC Current/Voltage/Wire range	[A]/[V]/[mm ²] 16 / 500 / *
UL额定电流/电压/接线面积 UL Current/Voltage/Wire range	[A]/[V]/[AWG] 15 / 300 / *
剥线长度/焊针出脚长度/焊针尺寸 Strip length/Pin length/Pin header size	[mm] * / 4.5 / 1.0x1.0
通道数 Poles No.	2-24



订货号 Order No.	475703-00D ○ 白灰色Light gray 475704-00D 475705-00D
IEC额定电流/电压/接线面积 IEC Current/Voltage/Wire range	16 / 500 / *
UL额定电流/电压/接线面积 UL Current/Voltage/Wire range	20 / 600 / *
剥线长度/焊针出脚长度/焊针尺寸 Strip length/Pin length/Pin header size	* / 4.5 / 1.0x1.0
通道数 Poles No.	3 / 4 / 5



订货号 Order No.	475703-02D ○ 白灰色Light gray 475704-02D 475705-02D
IEC额定电流/电压/接线面积 IEC Current/Voltage/Wire range	16 / 500 / *
UL额定电流/电压/接线面积 UL Current/Voltage/Wire range	20 / 600 / *
剥线长度/焊针出脚长度/焊针尺寸 Strip length/Pin length/Pin header size	* / 3.8 / 1.0x1.0
通道数 Poles No.	3 / 4 / 5



订货号 Order No.	475703-03D ○ 白灰色Light gray 475704-03D 475705-03D
IEC额定电流/电压/接线面积 IEC Current/Voltage/Wire range	16 / 500 / *
UL额定电流/电压/接线面积 UL Current/Voltage/Wire range	20 / 600 / *
剥线长度/焊针出脚长度/焊针尺寸 Strip length/Pin length/Pin header size	* / 3.8 / 1.2x1.2
通道数 Poles No.	3 / 4 / 5



订货号 Order No.	475702-04D ○ 白灰色Light gray 475703-04D 475724-04D
IEC额定电流/电压/接线面积 IEC Current/Voltage/Wire range	16 / 500 / *
UL额定电流/电压/接线面积 UL Current/Voltage/Wire range	20 / 600 / *
剥线长度/焊针出脚长度/焊针尺寸 Strip length/Pin length/Pin header size	* / 3.8 / 1.2x1.2
通道数 Poles No.	2-24

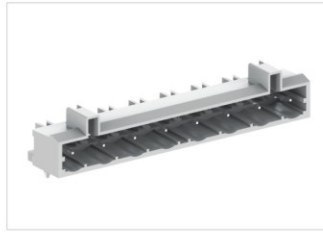


订货号 Order No.	475703-05D ○ 白灰色Light gray 475704-05D 475705-05D
IEC额定电流/电压/接线面积 IEC Current/Voltage/Wire range	16 / 500 / *
UL额定电流/电压/接线面积 UL Current/Voltage/Wire range	20 / 600 / *
剥线长度/焊针出脚长度/焊针尺寸 Strip length/Pin length/Pin header size	* / 5.0 / 1.2x1.2
通道数 Poles No.	3 / 4 / 5



订货号 Order No.	475703-06D ○ 白灰色Light gray 475704-06D 475705-06D
IEC额定电流/电压/接线面积 IEC Current/Voltage/Wire range	16 / 500 / *
UL额定电流/电压/接线面积 UL Current/Voltage/Wire range	20 / 600 / *
剥线长度/焊针出脚长度/焊针尺寸 Strip length/Pin length/Pin header size	* / 5.0 / 1.2x1.2
通道数 Poles No.	3 / 4 / 5

7.5mm间距弯型焊针插座(防错)
7.5mm Male connector
with angled solder pin
(protected against mismatching)



订货号 Order No.	475802 ○ 白灰色Light gray 475803 475824
IEC额定电流/电压/接线面积 IEC Current/Voltage/Wire range	[A]/[V]/[mm ²] 16 / 500 / *
UL额定电流/电压/接线面积 UL Current/Voltage/Wire range	[A]/[V]/[AWG] 15 / 300 / *
剥线长度/焊针出脚长度/焊针尺寸 Strip length/Pin length/Pin header size	[mm] * / 3.8 / 1.0x1.0
通道数 Poles No.	2-24

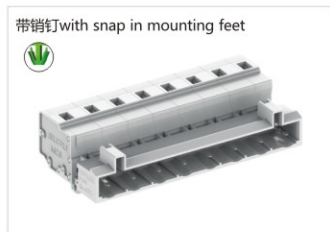
7.5mm间距针型连接器(防错)
7.5mm Male connector with
spring-cage clamp
(protected against mismatching)



订货号 Order No.	475902 ○ 白灰色Light gray 475903 475924
IEC额定电流/电压/接线面积 IEC Current/Voltage/Wire range	[A]/[V]/[mm ²] 16 / 500 / 0.2-2.5
UL额定电流/电压/接线面积 UL Current/Voltage/Wire range	[A]/[V]/[AWG] 15 / 300 / 28-14
剥线长度/焊针出脚长度/焊针尺寸 Strip length/Pin length/Pin header size	[mm] 8-9 / * / *
通道数 Poles No.	2-24



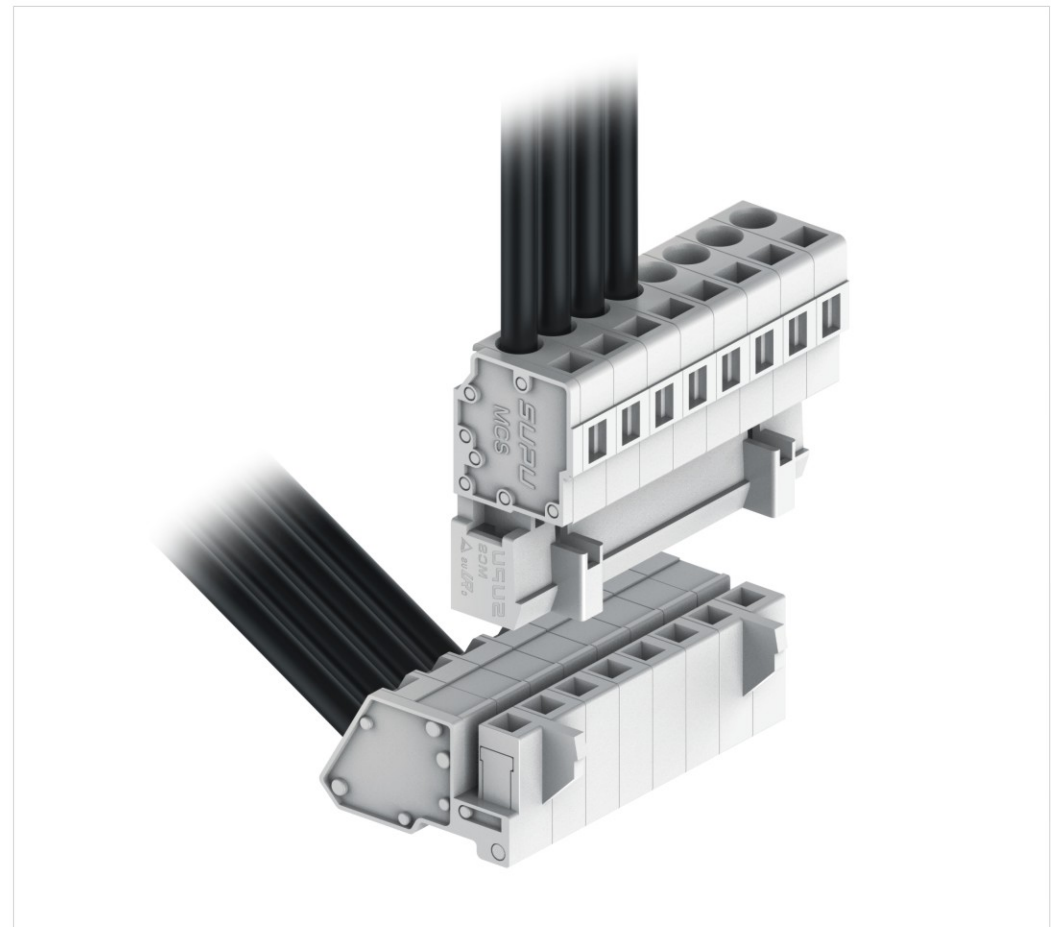
订货号 Order No.	475902/010 ○ 白灰色Light gray 475903/010 475924/010
IEC额定电流/电压/接线面积 IEC Current/Voltage/Wire range	16 / 500 / 0.2-2.5
UL额定电流/电压/接线面积 UL Current/Voltage/Wire range	15 / 300 / 28-14
剥线长度/焊针出脚长度/焊针尺寸 Strip length/Pin length/Pin header size	8-9 / * / *
通道数 Poles No.	2-24



订货号 Order No.	475902/030 ○ 白灰色Light gray 475903/030 475924/030
IEC额定电流/电压/接线面积 IEC Current/Voltage/Wire range	16 / 500 / 0.2-2.5
UL额定电流/电压/接线面积 UL Current/Voltage/Wire range	15 / 300 / 28-14
剥线长度/焊针出脚长度/焊针尺寸 Strip length/Pin length/Pin header size	8-9 / * / *
通道数 Poles No.	2-24



订货号 Order No.	475902/060 ○ 白灰色Light gray 475903/060 475924/060
IEC额定电流/电压/接线面积 IEC Current/Voltage/Wire range	16 / 500 / 0.2-2.5
UL额定电流/电压/接线面积 UL Current/Voltage/Wire range	15 / 300 / 28-14
剥线长度/焊针出脚长度/焊针尺寸 Strip length/Pin length/Pin header size	8-9 / * / *
通道数 Poles No.	2-24



7.62mm间距孔型连接器
7.62mm Female connectors

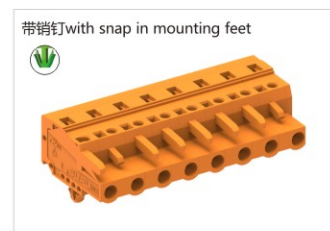
订货号 Order No.	
IEC额定电流/电压/接线面积 IEC Current/Voltage/Wire range	[A]/[V]/[mm ²]
UL额定电流/电压/接线面积 UL Current/Voltage/Wire range	[A]/[V]/[AWG]
剥线长度/焊针出脚长度/焊针尺寸 Strip length/Pin length/Pin header size	[mm]
通道数 Poles No.	



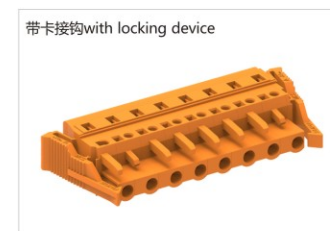
478102 ● 橙色 Orange	16 / 500 / 0.2-2.5
478103	15 / 300 / 28-14
478124	8-9 / * / *
	2-24



478102/010 ● 橙色 Orange	16 / 500 / 0.2-2.5
478103/010	15 / 300 / 28-14
478124/010	8-9 / * / *
	2-24



478102/030 ● 橙色 Orange	16 / 500 / 0.2-2.5
478103/030	15 / 300 / 28-14
478124/030	8-9 / * / *
	2-24

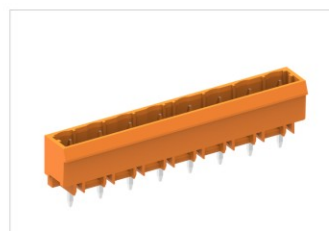


478102/050 ● 橙色 Orange	16 / 500 / 0.2-2.5
478103/050	15 / 300 / 28-14
478124/050	8-9 / * / *
	2-24

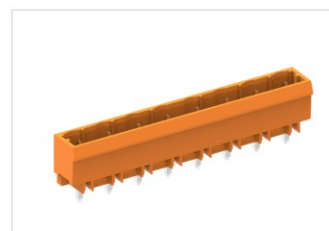


7.62mm间距直型焊针插座
7.62mm Male connector with straight pin

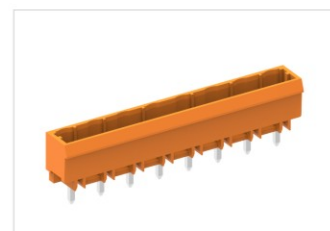
订货号 Order No.	
IEC额定电流/电压/接线面积 IEC Current/Voltage/Wire range	[A]/[V]/[mm ²]
UL额定电流/电压/接线面积 UL Current/Voltage/Wire range	[A]/[V]/[AWG]
剥线长度/焊针出脚长度/焊针尺寸 Strip length/Pin length/Pin header size	[mm]
通道数 Poles No.	



478202 ● 橙色 Orange	16 / 500 / *
478203	15 / 300 / *
478224	* / 4.5 / 1.0x1.0
	2-24



478202-04D ● 橙色 Orange	16 / 500 / *
478203-04D	20 / 600 / *
478224-04D	* / 3.8 / 1.2x1.2
	2-24



478202-06D ● 橙色 Orange	16 / 500 / *
478203-06D	20 / 600 / *
478224-06D	* / 5.0 / 1.2x1.2
	3 / 4 / 5

7.62mm间距弯型焊针插座
7.62mm Male connector with angled solder pin

订货号 Order No.	
IEC额定电流/电压/接线面积 IEC Current/Voltage/Wire range	[A]/[V]/[mm ²]
UL额定电流/电压/接线面积 UL Current/Voltage/Wire range	[A]/[V]/[AWG]
剥线长度/焊针出脚长度/焊针尺寸 Strip length/Pin length/Pin header size	[mm]
通道数 Poles No.	



478302 ● 橙色 Orange	16 / 500 / *
478303	15 / 300 / *
478324	* / 3.8 / 1.0x1.0
	2-24



478302-04D ● 橙色 Orange	16 / 500 / *
478303-04D	20 / 600 / *
478324-04D	* / 3.8 / 1.2x1.2
	2-24

7.62mm间距针型连接器
7.62mm Male connector with spring-cage clamp

订货号 Order No.	
IEC额定电流/电压/接线面积 IEC Current/Voltage/Wire range	[A]/[V]/[mm ²]
UL额定电流/电压/接线面积 UL Current/Voltage/Wire range	[A]/[V]/[AWG]
剥线长度/焊针出脚长度/焊针尺寸 Strip length/Pin length/Pin header size	[mm]
通道数 Poles No.	



478402 ● 橙色 Orange	16 / 500 / 0.2-2.5
478403	15 / 300 / 24-14
478424	8-9 / * / *
	2-24



478402/010 ● 橙色 Orange	16 / 500 / 0.2-2.5
478403/010	15 / 300 / 24-14
478424/010	8-9 / * / *
	2-24



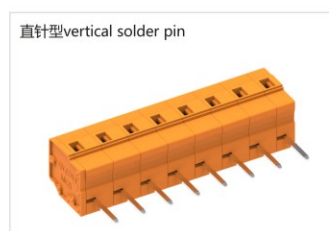
478402/030 ● 橙色 Orange	16 / 500 / 0.2-2.5
478403/030	15 / 300 / 24-14
478424/030	8-9 / * / *
	2-24



478402/060 ● 橙色 Orange	16 / 500 / 0.2-2.5
478403/060	15 / 300 / 24-14
478424/060	8-9 / * / *
	2-24

7.62mm间距穿墙式连接器
7.62mm Through-wall connector

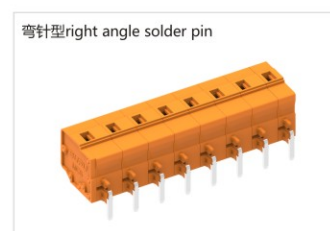
订货号 Order No.	
IEC额定电流/电压/接线面积 IEC Current/Voltage/Wire range	[A]/[V]/[mm ²]
UL额定电流/电压/接线面积 UL Current/Voltage/Wire range	[A]/[V]/[AWG]
剥线长度/焊针出脚长度/焊针尺寸 Strip length/Pin length/Pin header size	[mm]
通道数 Poles No.	



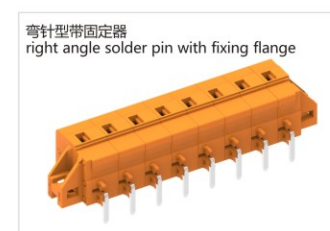
478462 ● 橙色 Orange	16 / 500 / 0.2-2.5
478463	15 / 300 / 24-14
478484	8-9 / * / *
	2-24



478462/010 ● 橙色 Orange	16 / 500 / 0.2-2.5
478463/010	15 / 300 / 24-14
478484/010	8-9 / * / *
	2-24



478432 ● 橙色 Orange	16 / 500 / 0.2-2.5
478433	15 / 300 / 24-14
478454	8-9 / * / *
	2-24



478432/010 ● 橙色 Orange	16 / 500 / 0.2-2.5
478433/010	15 / 300 / 24-14
478454/010	8-9 / * / *
	2-24

